

CERTIFICATE OF LOCATION OF GOVERNMENT CORNER

County of Anoka

State of Minnesota

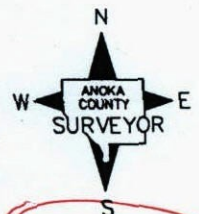
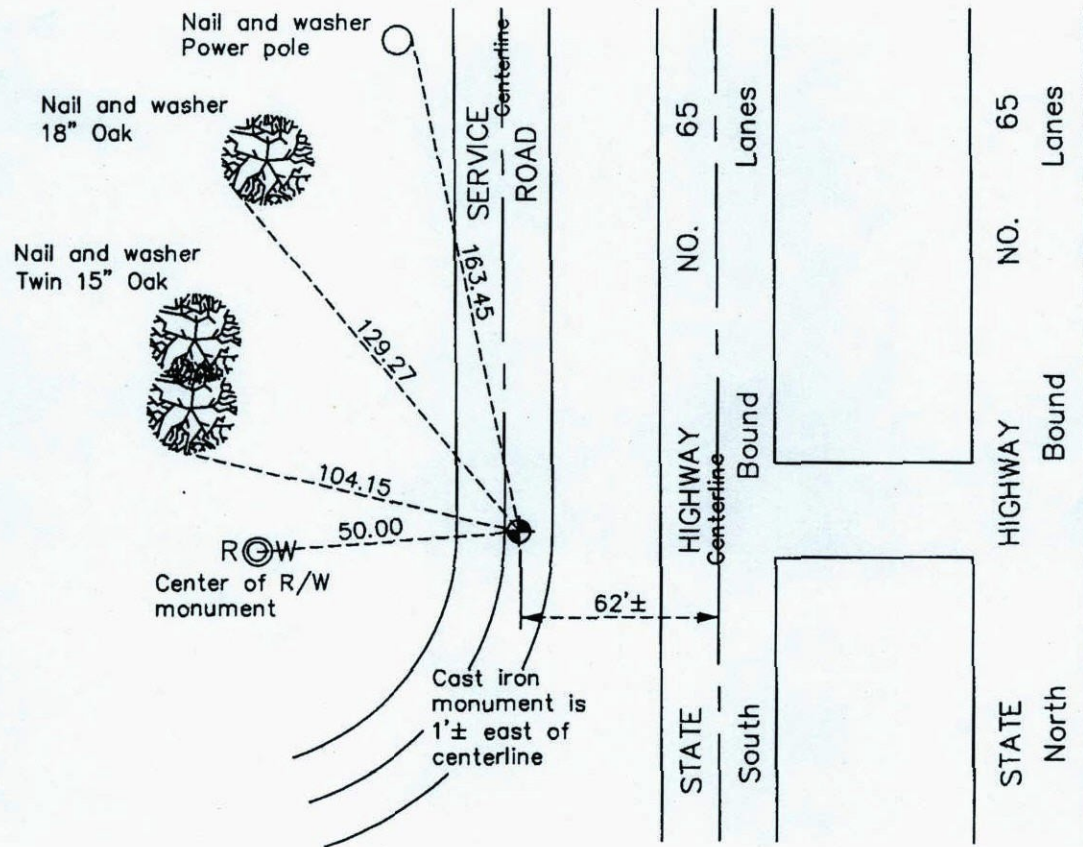
North $\frac{1}{4}$ Corner of Sec. 8 Township 32 Range 23

On the 4th day of September, 1969, the described corner was evidenced by a granite monument

and to perpetuate the location of said corner, at the exact location thereof, a permanent marker was placed consisting of a cast iron monument

AND on the 15th day of December, 2005, said permanent marker was replaced with a new cast iron monument on top of granite monument and the ties were updated

Updated reference ties are as shown below.



Revision Date
12/06/10

N.A.D. 1983 Coordinates
(1996 Adjustment)

County Project Coordinates	
Northing	190822.8065
Easting	508161.9022
Date	12/12/02

I hereby certify that this United States public land survey monument record is correct and complete to the best of my knowledge and belief.

Date 12/06/10

Larry D. Hoium, Anoka County Surveyor
 Minnesota License Number 18165

CERTIFICATE OF LOCATION OF GOVERNMENT CORNER

County of Anoka

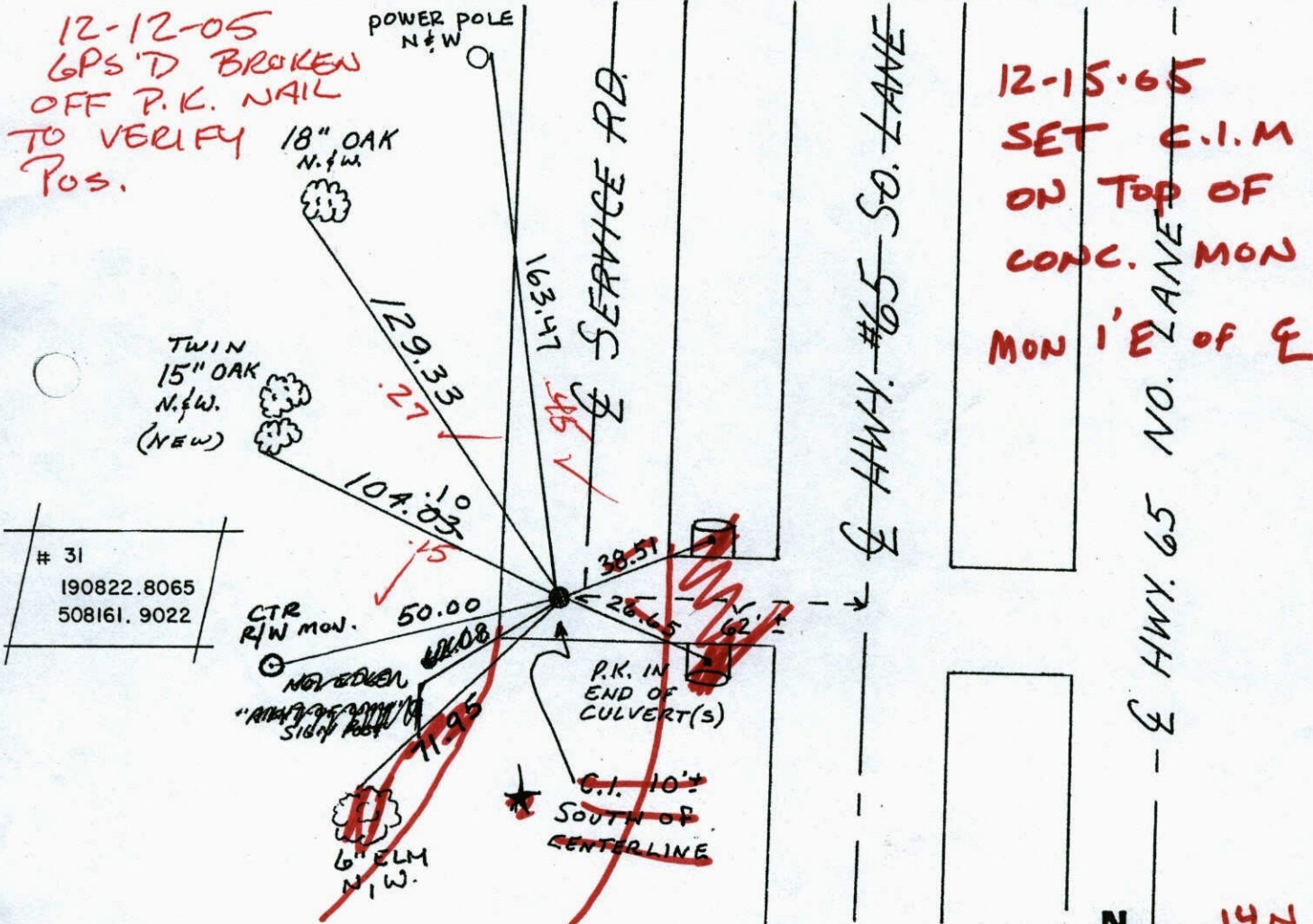
State of Minnesota

NORTH QTR. Corner of Sec. 8 Township 32 Range 23

I hereby certify that on the 4 day of SEPT., 1969, I found the described corner which was evidenced by GRANITE MON.

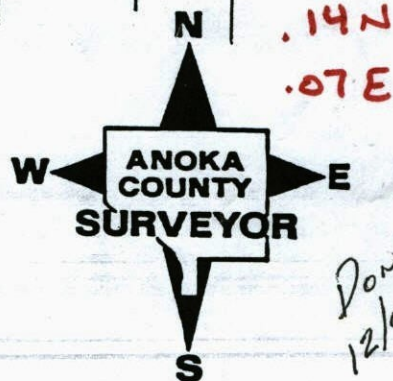
and I further certify that to perpetuate the location of said corner, I did, at the exact location thereof, place a permanent marker consisting of CAST IRON MON.
ON TOP OF CONCRETE MON.

which reference or witness monuments are located in the manner following:



31
190822.8065
508161.9022

Revised date	Revised date	Revised date
11-7-90		
10-24-90		
11-18-91		
12-28-94		
8-8-96		
12-12-02		



CERTIFICATE OF LOCATION OF GOVERNMENT CORNER

County of Anoka

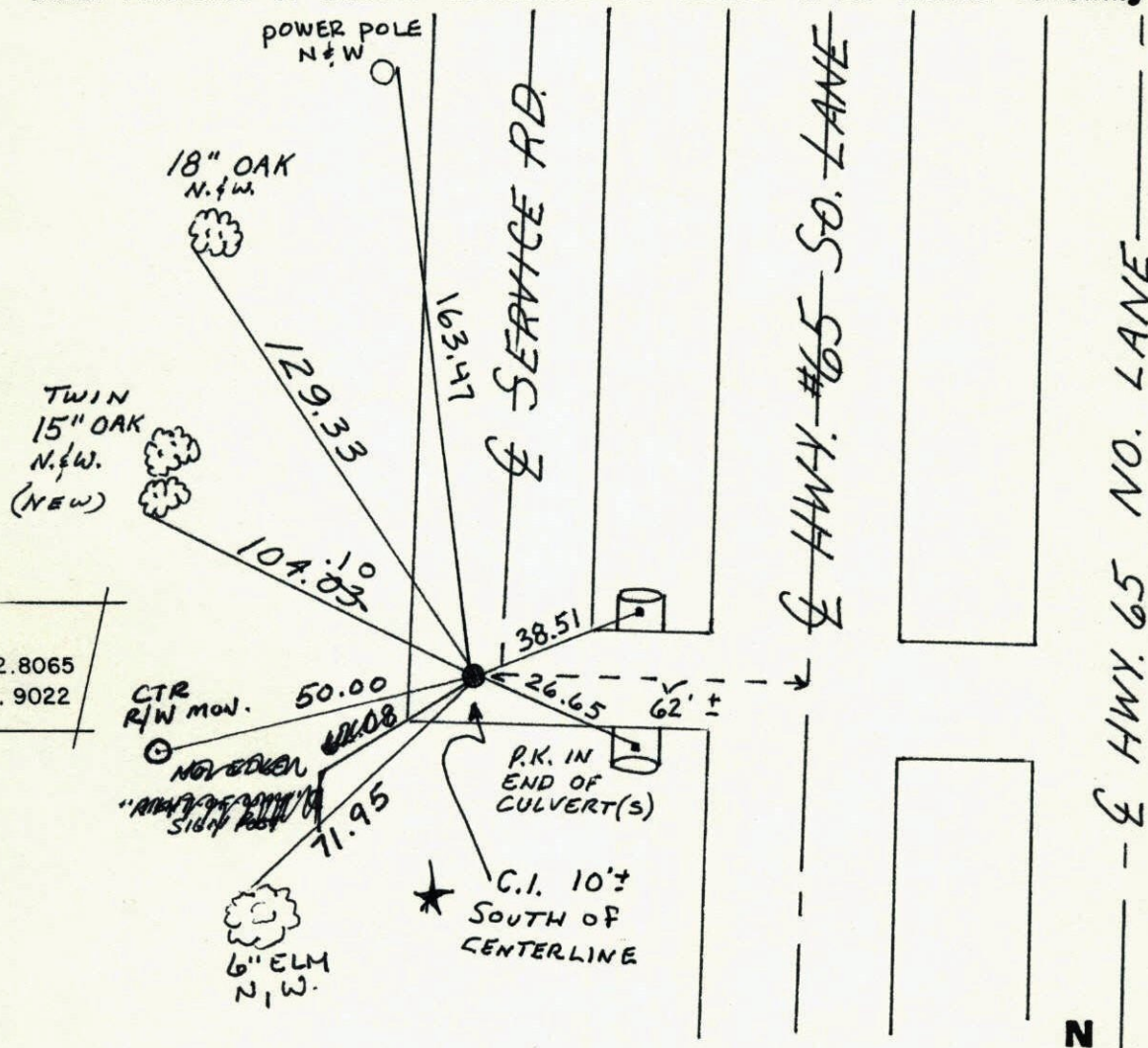
State of Minnesota

NORTH QTR. Corner of Sec. 8 Township 32 Range 23

I hereby certify that on the 4 day of SEPT., 1969, I found the described corner which was evidenced by GRANITE MON.

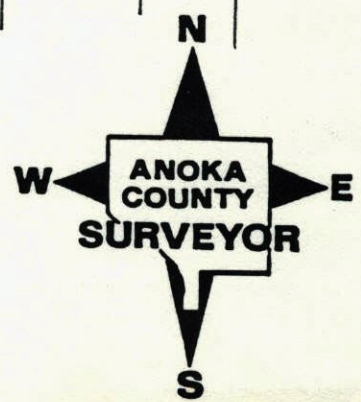
and I further certify that to perpetuate the location of said corner, I did, at the exact location thereof, place a permanent marker consisting of CAST IRON MON.

which reference or witness monuments are located in the manner following:



31
190822.8065
508161.9022

Revised date	Revised date	Revised date
11-7-90		
10-24-90		
11-18-91		
12-28-94		
8-8-96		
12-12-02		



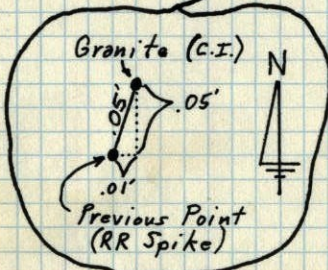
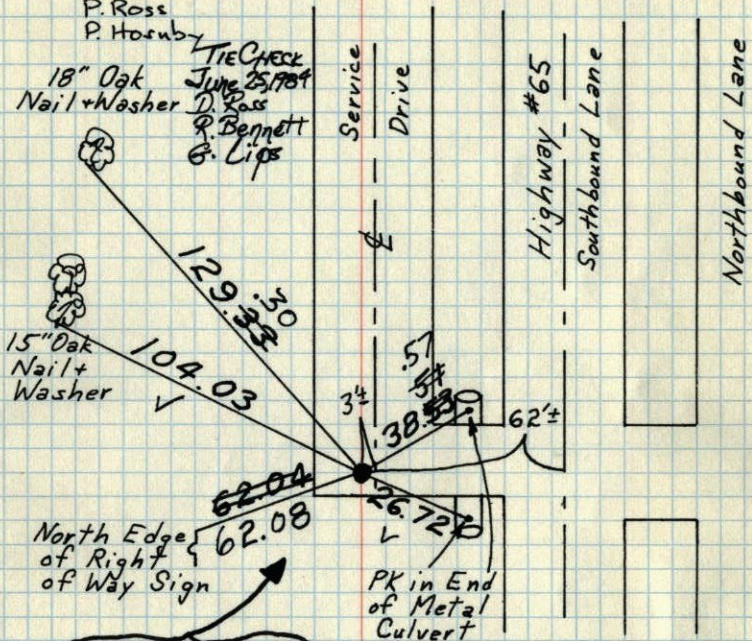
N¹/₄ Cor. Sec. 8-T32-R23

Set Cast Iron Monument flush on top of Granite Monument down 1.7'± PK's 2.00' North + East.

Sept. 4, 1969
D. Powell
R. Olson
B. Olson

Tie Check
6-24-81
P. Ross
P. Horuby

TIE CHECK
June 25, 1984
D. Ross
P. Bennett
B. Lips



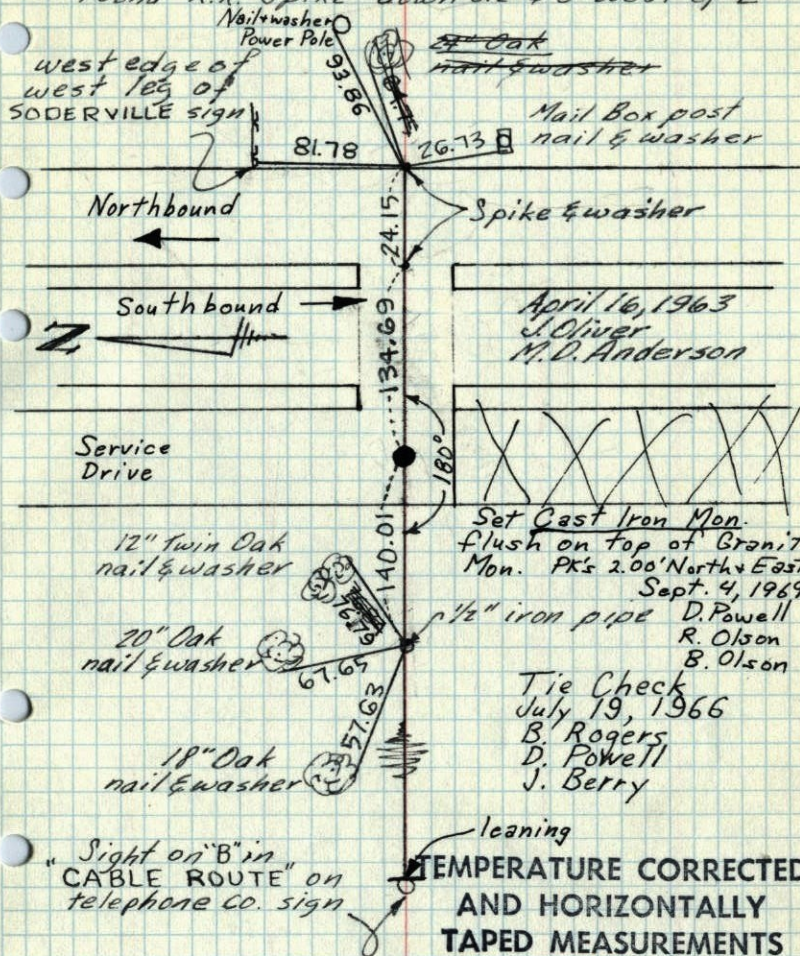
Tie Check June 8, 1978 D. Dahl D. Stephens M. Kisrow	Tie Check June 6, 1975 D. Dahl B. Sannerud G. Adams
--	---

TEMPERATURE CORRECTED
AND HORIZONTALLY
TAPED MEASUREMENTS

ROLAND W. ANDERSON
COUNTY SURVEYOR
ANOKA COUNTY, MINNESOTA

N¹/₄ Cor. Sec. 8-32-23

Found R.R. Spike down 0.2' & 3' west of E



April 16, 1963
J. Oliver
M. D. Anderson

Set Cast Iron Mon.
flush on top of Granite
Mon. PK's 2.00' North + East.
Sept. 4, 1969
D. Powell
R. Olson
B. Olson

Tie Check
July 19, 1966
B. Rogers
D. Powell
J. Berry

leaning
"Sight on 'B' in
"CABLE ROUTE" on
telephone co. sign

TEMPERATURE CORRECTED
AND HORIZONTALLY
TAPED MEASUREMENTS

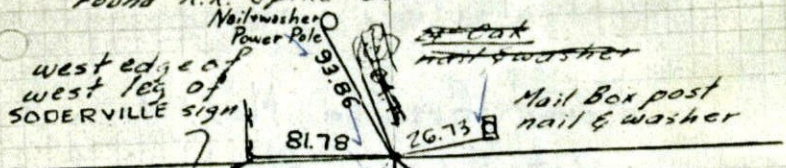
ROLAND W. ANDERSON
COUNTY SURVEYOR
ANOKA COUNTY, MINNESOTA

See Back

30

N. 74 Cor. Sec. 8-32-23

Found R.R. Spike down 0.2' & 3' west of E



Northbound

Southbound

Service Drive

12" Twin Oak
nail & washer

20" Oak
nail & washer

18" Oak
nail & washer

Sight on "B" in
"CABLE ROUTE" on
telephone co. sign

Set C.I. Mon.

flush in place of R.R. Spike. PK's 2.00' N+E

8/9/4/69

D. Powell

R. Olson

B. Olson

~~12" Oak~~
nail & washer

Mail Box post
nail & washer

Spike & washer

April 16, 1963
J. Oliver
M. D. Anderson

1/2" iron pipe

Tie Check
July 19, 1966
B. Rogers
D. Powell
J. Berry

leaving

TEMPERATURE CORRECTED
AND HORIZONTALLY
TAPED MEASUREMENTS

ROLAND W. ANDERSON
COUNTY SURVEYOR
ANOKA COUNTY, MINNESOTA

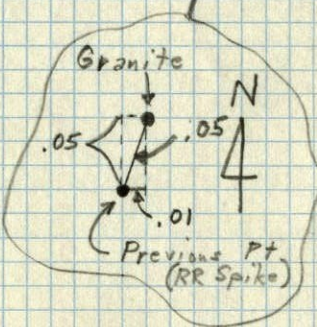
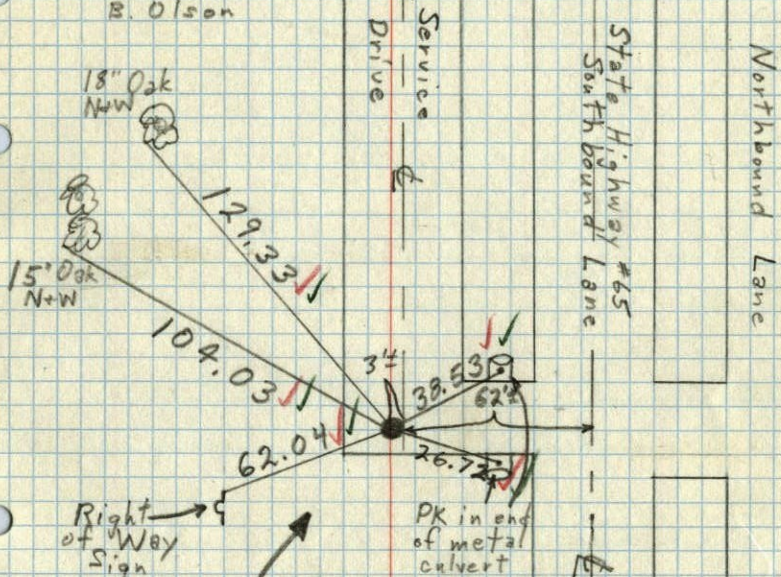
Found iron pin under blacktop
0.25' N + 0.1' W

Found Granite Mon. down 1.7' ±
Set C.I. Mon. flush on top
of Granite. PK's 2.00' N+E.

N¹/₄ Cor, Sec. 8 - T32 - R23

Set O.I. Mon. flush on top of Granite
Monument down 1.7', PK's 2.00' N+E,

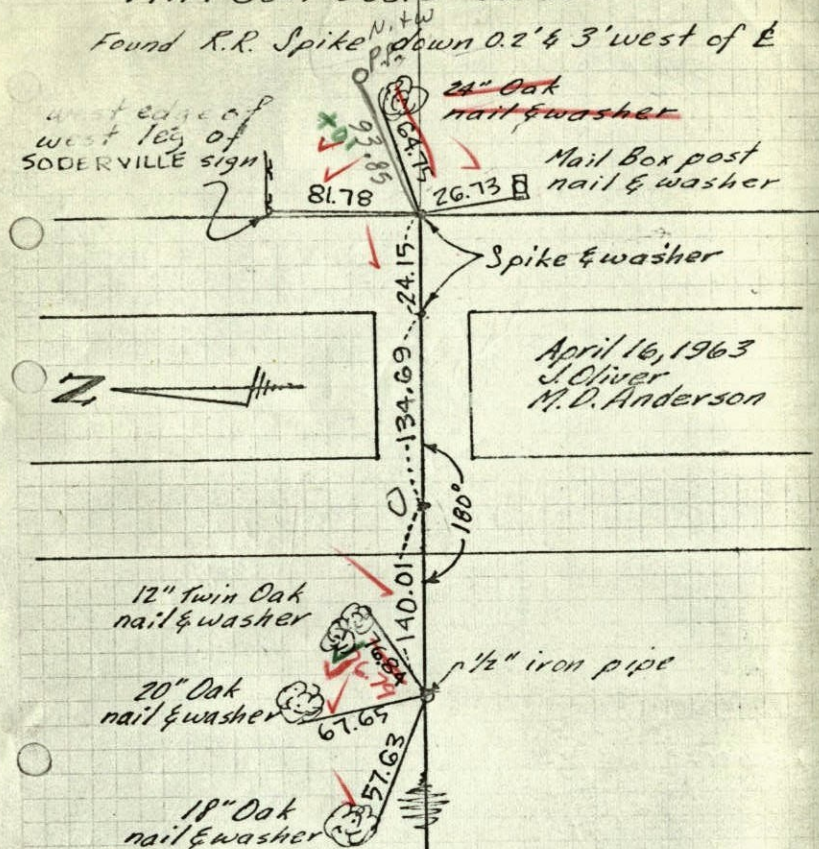
9/4/69
#9-70
D. Powell
R. Olson
B. Olson



N¹/₄ Cor. Sec. 8-32-23

Found R.R. Spike down 0.2' & 3' west of E

west edge of
west leg of
SODERVILLE sign



TEMPERATURE CORRECTED
AND HORIZONTALLY
TAPED MEASUREMENTS

Sight on "B" in
"CABLE ROUTE" on
telephone co. sign

Ties checked
7/19/66

B. Koyne
D. Powell
J. Berry

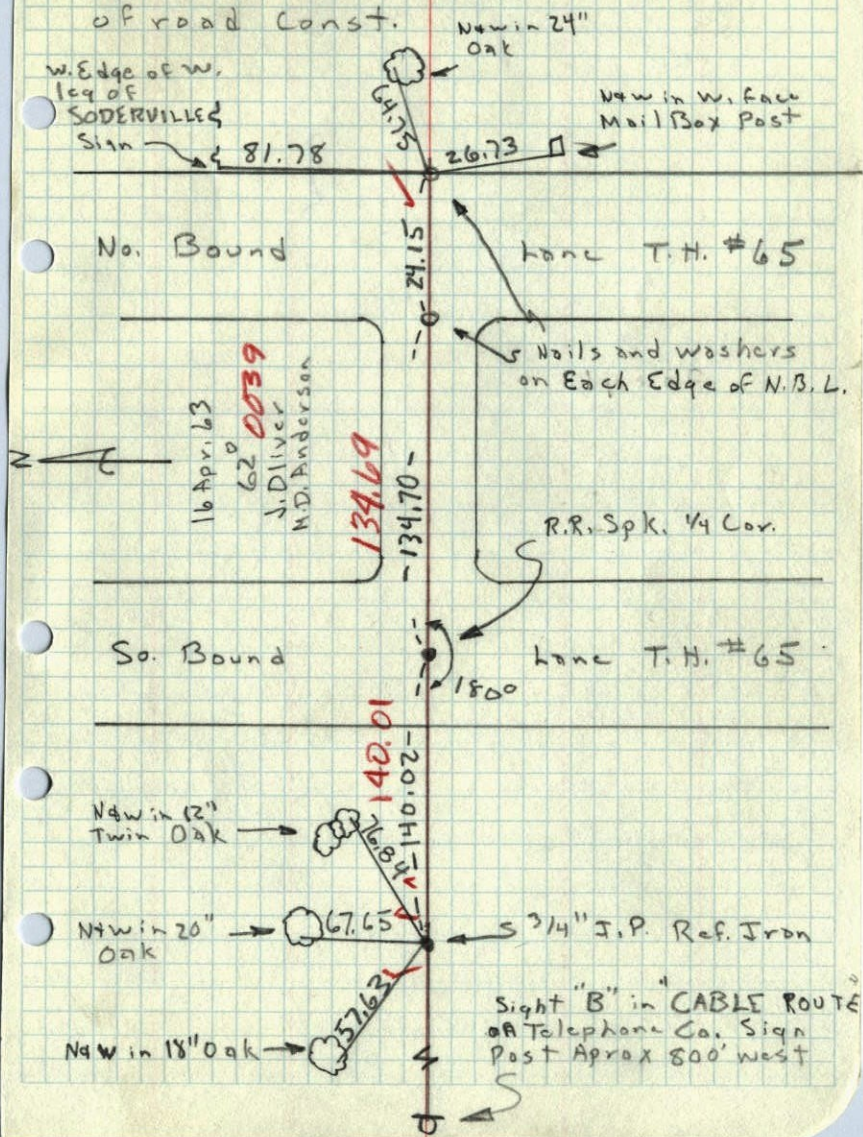
Temp. 45
70

ROLAND W. ANDERSON
COUNTY SURVEYOR
ANOKA COUNTY, MINNESOTA

N 1/4 Cor. Sec. 8, T32, R23

Found R.R. Spike 30' W of E Blk Top

Down 0.2'. Additional Ties because
of road Const.



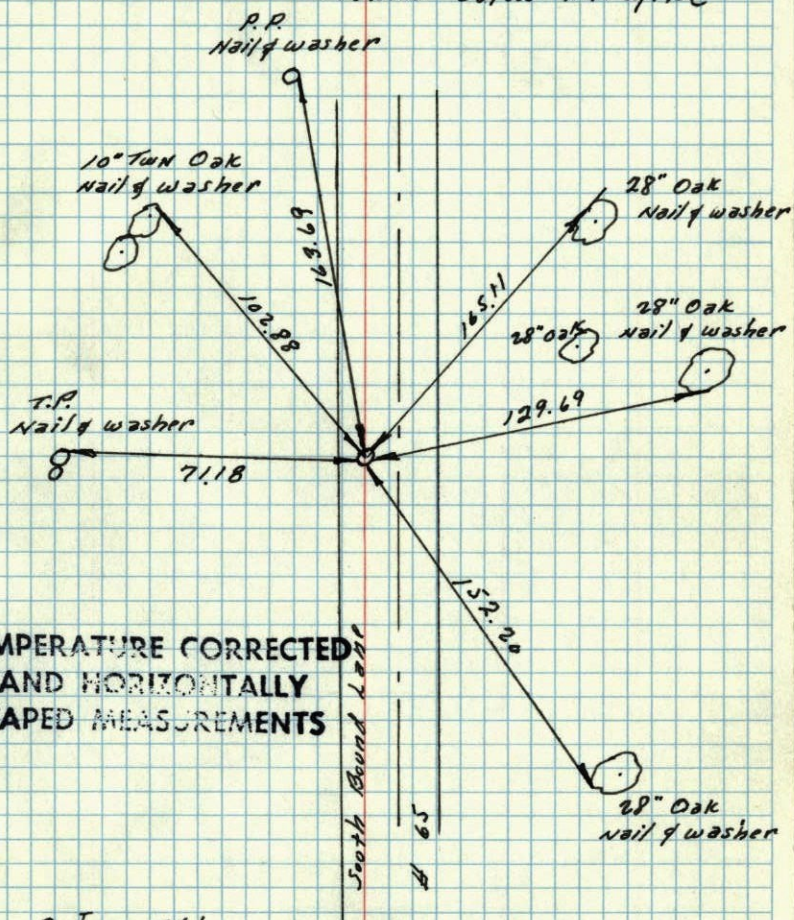
28

N 1/4 Cor. Sec 8-32-23 (Ham Lake)

Found R.R. Spike 30' W of E Blacktop Hwy #65

Down 0.2' under top layer blacktop

Granite Below R.R. Spike



9 Jan. 1961

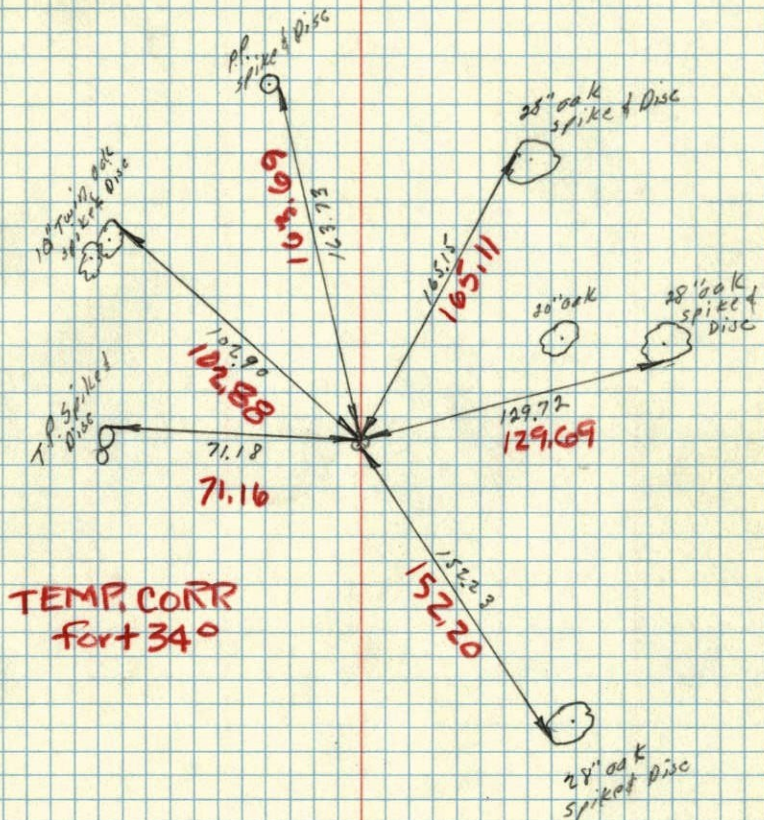
R. Freeman
M. Anderson.

ROLAND W. ANDERSON
COUNTY SURVEYOR
ANOKA COUNTY, MINNESOTA

9 Jan 1961
 Freeman - Anderson
 + 34°

N $\frac{1}{4}$ Cor Sec 8-32-23 (Horn Lake)

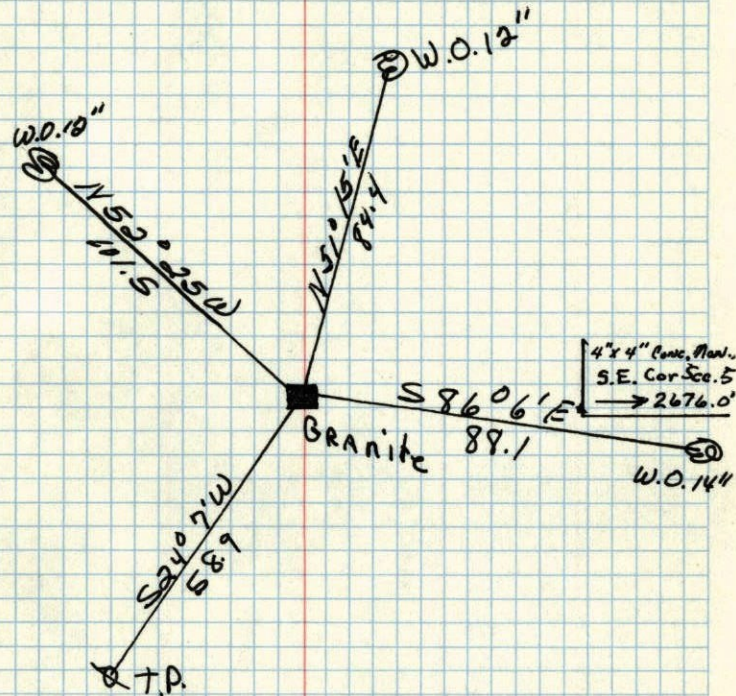
Found R.R. Spike in $\frac{1}{2}$ Blacktop Hwy #65
 Down 0.2' under Top layer Blacktop.



8
 S $\frac{1}{4}$ COR. of Sec. 9 T. 32 R. 23

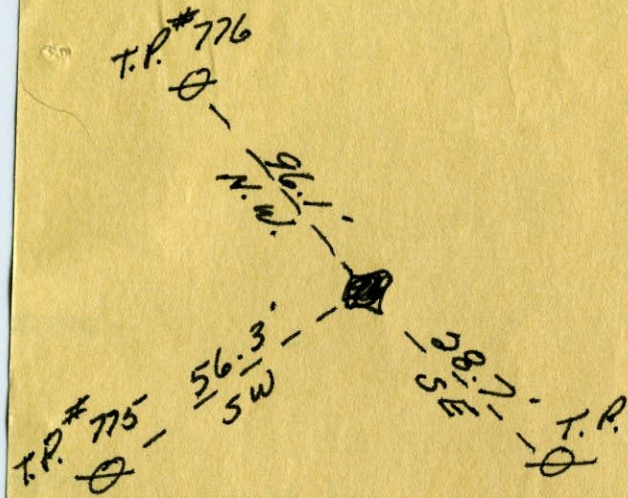
GRANITE 6"x6" down 2.0 in the Rd.

3-15-57 ANGLE IRON 0.1 DOWN



Apr. 20, 1943
 Cartwright

W 1/4 cor. sec. 8 T 32 R 23



OK 9/20/22